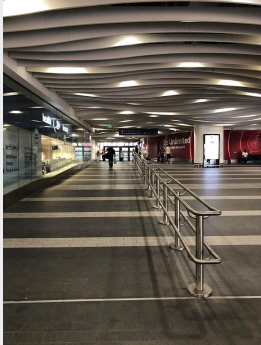


Walking Directions

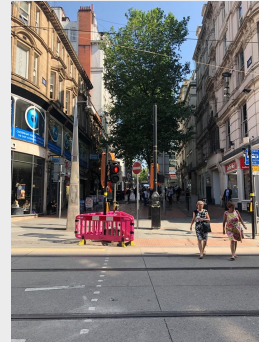
Grand Central (New Street) Station to ICC

01



On arrival at Birmingham New Street Station, follow signs to 'New Street/Victoria Square' exit. You will pass Boots on your left. Continue round the left hand corner past Greggs and exit through the doors on right.

02



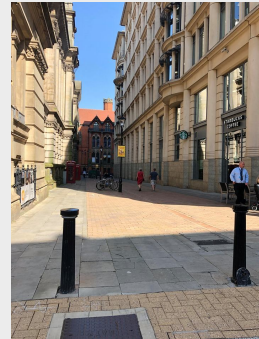
On exiting New Street Station, cross the tram line and head straight up Lower Temple Street. When reaching New Street (Tim Hortons will be on the left), turn left.

03



When reaching Superdrug on the left, turn right up Bennetts Hill, Ask Italian will be on the left. Turn left at the top of Bennetts Hill.

04



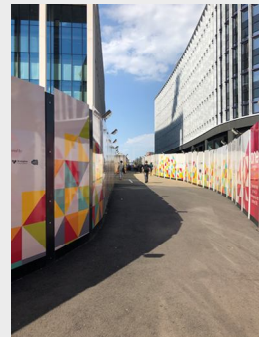
Continue straight, following the curve of the road. When reaching Victoria Square keep to the right following the road. Turn left at Starbucks continuing down Eden Place.

05



Turn left at the end of the street, onto Edmund Street. Continue until you reach Centenary Way. Keep right and enter the building barriers.

06



Continue and you will enter Centenary square. Continue past the library which will be on your right hand side.

07



Enter the venue and follow directions for the event.

Walking Directions

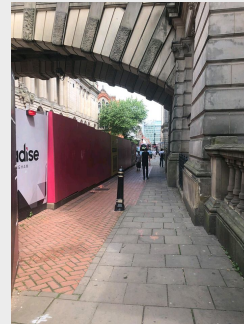
ICC to Grand Central (New Street) Station

01



Exit the venue, walk straight through Centenary square, past the library and into the boarding.

02



Follow the boarding and turn left to enter Edmund street. Follow the street, taking the first right onto Eden Place.

03



Turn right at the end of Eden Place, following the curve of the road, passing Waterloo House.

04



Follow Waterloo Street, taking the first right down Bennetts Hill.

05



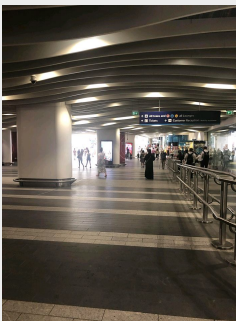
At the end of the street, take a left turn onto New Street.

06



Take the next right turn onto Lower Temple street, crossing the road at the end into Grand Central Station.

07



Through the doors, turn left and enter the main station. With large screens for train times in the main square at the centre of the building.